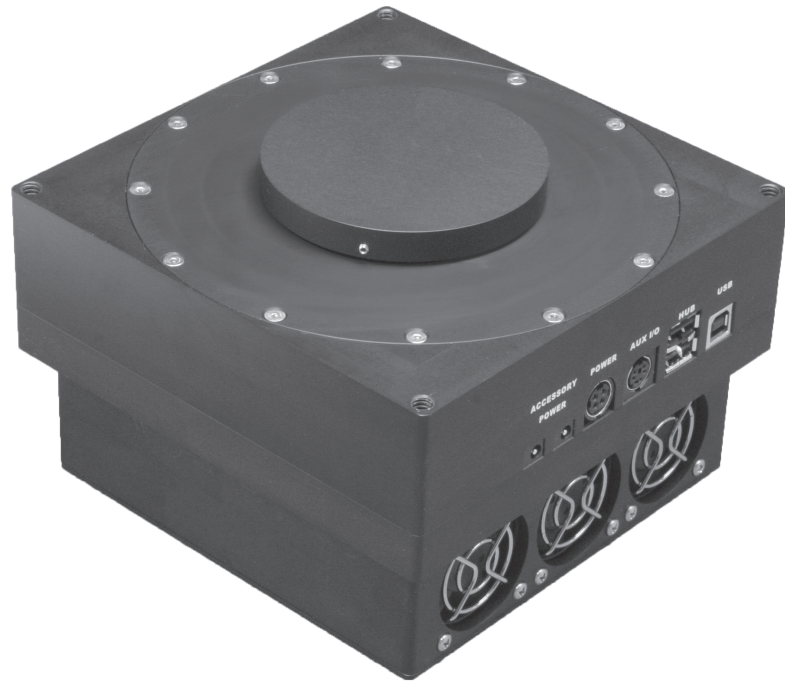


4096 x 4096 Imaging Array Size 9 μm Pixel Size

ProLine sets the standards in key performance areas that include: Download Speeds, Cooling, Low Noise Operation, Anti-Ghosting Technology, Image Quality, and Linearity. ProLine download speeds are fast (download speeds of 14 million pixels per second are available). ProLine achieves a 70°C cooling sustainable cooling without water assist. Simply set the ProLine cooling where you want it and the camera will do the rest – quickly and without worries. ProLine frame quality is second to none thanks to careful design, implementation and setup. All cameras are assembled in our clean room under exacting conditions and must pass a battery of tests before being shipped.



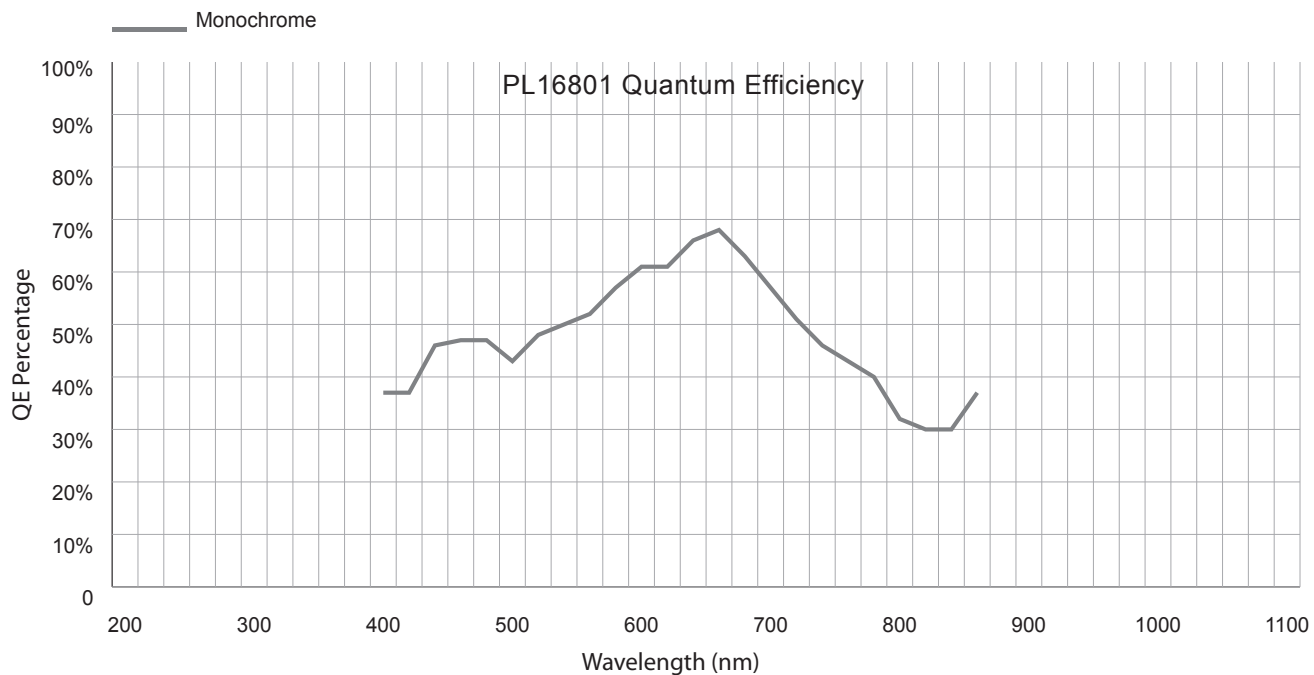
Applications

- | | |
|---------------------|-------------------------|
| Digital Radiography | Gel Documentation |
| Astronomy | Forensic Imaging |
| Bioluminescence | Satellite Imaging |
| Chemoluminescence | Low Light Level Imaging |

Features	Benefits
Up to 8 MHz Download Speed	Fast image capture with full 16-bit resolution
4096 x 4096 Array Size / 9 μm Pixel Size	Resolves fine detail
Flexible Binning and Readout	Increases frame rate
Thermoelectric Cooling to -60° C	Excellent low-noise imaging
Excellent Quantum Efficiency	High sensitivity
C-Mount and F-Mount Available	Offers a wide variety of optical choices
Acquisition Software	Supplied with camera and includes our open source SDK
USB 2.0 Interface	Industry standard connectivity, fast data transfer



Quality. Cooled. Cameras.

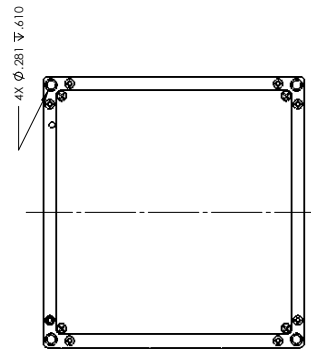
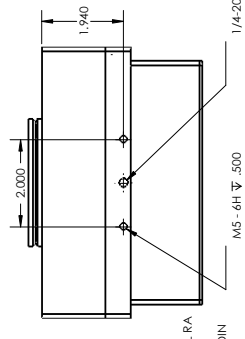
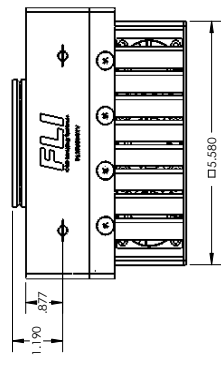
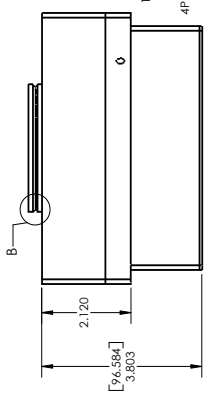
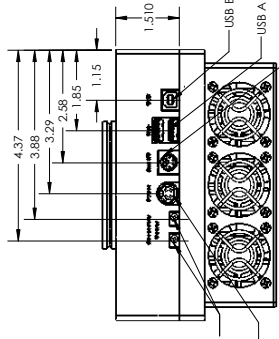
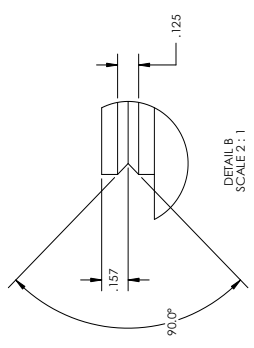
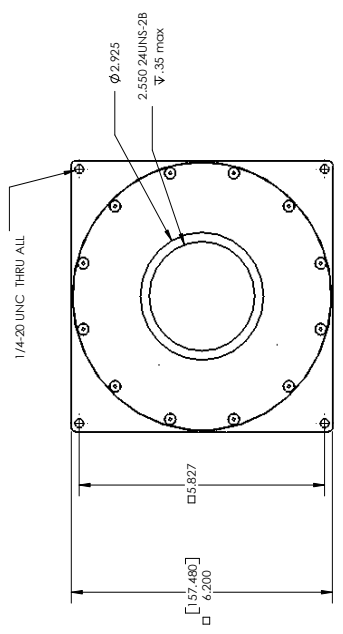
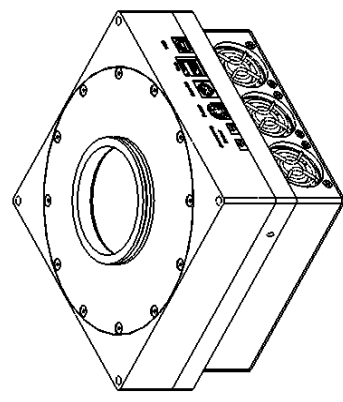


PL16801 Specifications	
Sensor	KAF-16801
Array Size	4096 x 4096
Pixel Size	9 μ m
Typical Maximum Cooling	-60° C Below Ambient
Typical Download Speeds @ 16-bit	1 MHz, 8 MHz (other speeds available)
Typical System Noise	9 e- RMS @ 8 MHz
Nonlinearity	<1%
Temperature Stability	0.1° C
Operating Environment	-30° C - 45° C 10% - 90% Relative Humidity
Sensor Manufacturer	Kodak
CCD Grades Available	1, 2
CCD Type	Front Illuminated
Color/Monochrome	Monochrome
Mega Pixels	16.8
Sensor Diagonal	52.1 mm
Linear Full Well	100,000 e-
Typical Dark Current	<0.08 e-/pixel/sec. @ -35° C
Anti Blooming	None
Available Shutters	65 mm
Shutter MTBF	1,000,000
Remote Triggering	Standard
Power	12v
Interface	USB 2.0
Dimensions	6.2 x 6.2 x 3.8 (157.48 x 157.48 x 96.52)

* Due to continuous development all specifications subject to change



REV. A	DESCRIPTION	DATE
1	ASSEMBLY DRAWING	12/29/2018



LINES OR DIMENSIONS SPECIFIED		NAME	DATE
DRAWN		REC.	DATE
CHECKED		APP.	DATE
ENGINEER		DATE	
PROJECT			
SHEET NO.			
TOTAL SHEETS			

PROPERTY AND COMMENTARY		APPLICATION	
ALL INFORMATION CONTAINED HEREIN IS THE PROPERTY OF FLI OPTICS INC.		NEW ASSY	
REPRODUCTION OF THIS DRAWING WITHOUT THE WRITTEN PERMISSION OF FLI OPTICS INC. IS PROHIBITED.		USED ON	
		DO NOT SCALE DRAWING	

TITLE: PL(X) 65MM		SCALE: 1:2	
Camera Assy		SHEET 1 OF 1	
PROLINE			
REV. A			
ASSY_PL(X)_65MM_AC			